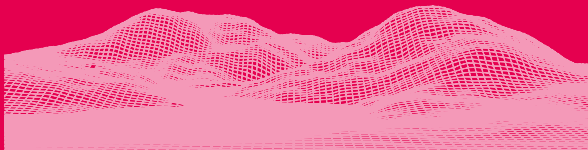


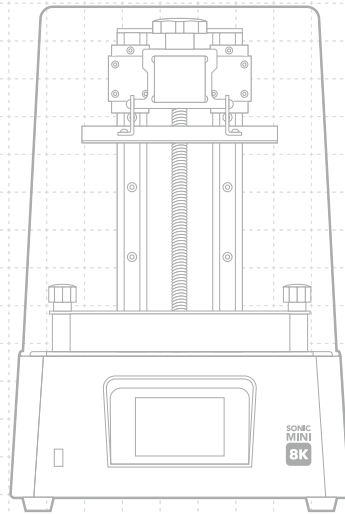


SONIC
MINI
8K



Dear User,

Thank you for joining us. Please read the Sonic Mini 8K manual thoroughly and follow the instructions step by step to get the best printing experience.



01 Introduction

Printer Parts

PART.1
Building Plate

PART.2
Resin Vat

PART.3
LCD Screen

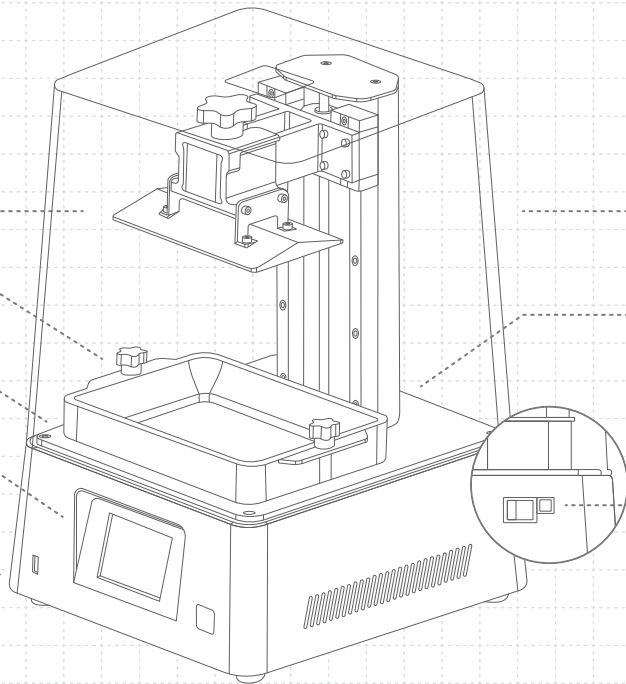
PART.4
Touch Panel

PART.5
USB Port

PART.6
Plastic Case

PART.7
Z-axis

PART.8
Power Switch
Power Socket



The Toolbox



After Sales Service Card



Gloves



Power Adapter



Plastic Funnel



Scrapers



Allen Wrench



USB

Operation

System	Phrozen OS
Operation	3.5 inch Touch Panel
Slicer Software	CHITUBOX V1.9.0 or above
Connectivity	Front USB Port

Printing Specifications

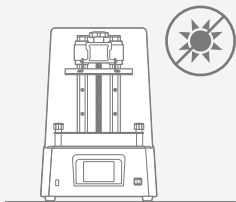
Technology	Resin 3D Printer - LCD Type
Light Source	Linear Projection LED Module
XY Resolution	0.022 mm
Layer Thickness	0.01-0.30 mm
Max Printing Speed	80 mm / hr
Power Requirement	100-240V AC ; 50-60Hz

Hardware Specifications

Printer Size	L29 x W29 x H42 cm
Printing Volume	L16.5 x W7.2 x H18 cm
Printer Weight	13 kg

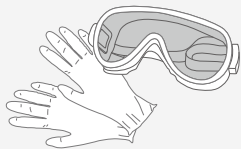
* All specifications have been tested in a laboratory. Please note that certain specifications may be subject to change without prior notice.

02 Key Notes Before Start



Stable Printing Environment

Store your 3D printer in a dry and ventilated environment. Avoid exposure to direct sunlight. Make sure to place the printer on a flat surface.



Protective Measures

While printing and using resin, please make sure to wear gloves, masks, protective goggles, and long-sleeved clothing.

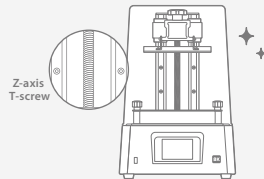
Maintenance

Clean the Z-axis

First, dry clean the Z-axis T-screw. Then apply a thin layer of general lubricant on it, so that it whirls smoothly.

Clean the 3D Printer

Use sanitizing alcohol and tissue paper to carefully clean the printer, the resin vat, and the building plate.

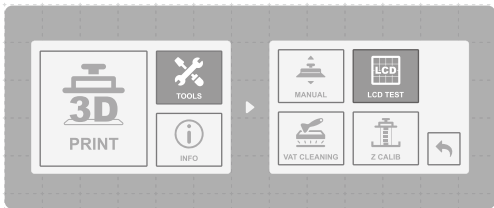


03 Prepare Your 3D Printer

For first-time use, please thoroughly follow the steps down below to calibrate your Z-axis and conduct the LCD Test so that your 3D printer is ready.

LCD Test

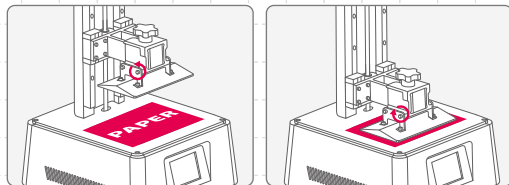
- 1 Click on TOOLS. Then click on LCD TEST.
- 2 Check to see if the LCD screen displays the same image as seen on the touch panel.
- 3 When the LCD screen clearly displays the image, the LCD TEST is complete.



*Please refer to the actual printer operation based on the touchscreen display.

Z-axis Calibration

- 1 Click on TOOLS. Then click on Z CALIB.
- 2 Remove the resin vat. Place a piece of A4 paper on the LCD. Unscrew 4 screws on the sides of the building plate.
- 3 Wait until the building plate touches the LCD screen.
- 4 Then tighten all 4 screws. Tug the paper to make sure it can't be moved easily. Click DONE to finish calibration.
- 5 Wait until the building plate retracts to the TOP. Z-axis Calibration is now complete.



04 Perform the Printing Test

After conducting the Z-axis Calibration and LCD TEST, let's move on to the Printing Test.

Prepare Your 3D File

- 1 On your computer, import the STL file to CHITUBOX V1.9.0 or above.
- 2 Click on Settings to add a new printer "Sonic Mini 8K." Set your Print Parameters according to the resin you will use.
- 3 Slice the 3D file and save it as CTB file, then import it onto your USB.



Download Slicer



Resin Profile

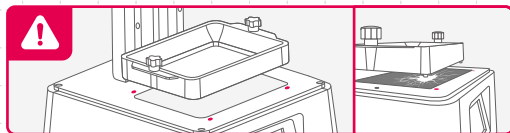
Want to have the best print performance? Then check out our recommended resin profiles now.

Printing Test

- 1 Please make sure the bottom screws of the resin vat

are perfectly aligned with the platform grooves, then tighten the screws on both sides. When placing the resin vat, please pay attention to the bottom screws and **DO NOT** damage the LCD screen.

- 2 Shake the resin bottle for 1 minute. When pouring, make sure the resin does not exceed the max fill line on the resin vat.
- 3 Insert your USB into Sonic Mini 8K. Choose the file and click GO to begin printing.
- 4 Keep the plastic case closed during printing to prevent exposure to excessive UV light.
- 5 After printing, carefully remove the building plate and then tilt and place it onto a desk or a flat surface. Use a metal scraper to carefully remove your print.



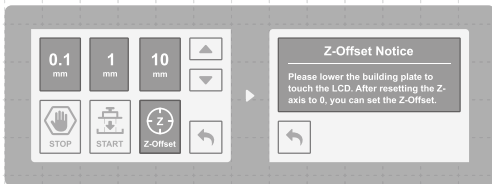
Use the Z-Offset Function to Reposition the Z-axis

After calibrating the Z-axis, you can use this function to modify your Z-axis zero position, if needed. Use this function if you are looking to print flat on the building plate or if the resin flow is slow.

Click the following buttons on the touchscreen:

TOOLS > MANUAL > START > 0.1mm up or down > RESET > SET

Tips: If you restart the printer, the device will be reset to its original settings.



After-sales service & warranty

- Phrozen offers a one-year warranty for all parts, excluding consumable components such as the LCD screen and FEP film.
- Sonic Mini 8K LCD screen is covered under a 3-month warranty. Please note that this warranty does not cover any damages caused by human factors.
- If you encounter any difficulties, please scan the QR codes down below to contact us.

Contact us!



Congratulations!

You have just completed your first run.
We hope you've had a great experience!

Please follow Phrozen's social media accounts
and subscribe to our YouTube channel to learn
more about printing tips and share information
with the community.



Facebook



Facebook Group
Sonic Mini 8K



YouTube

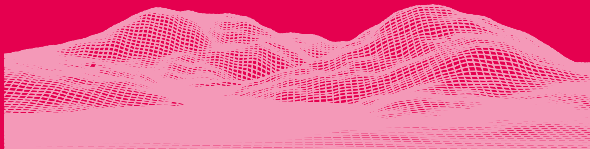


Instagram



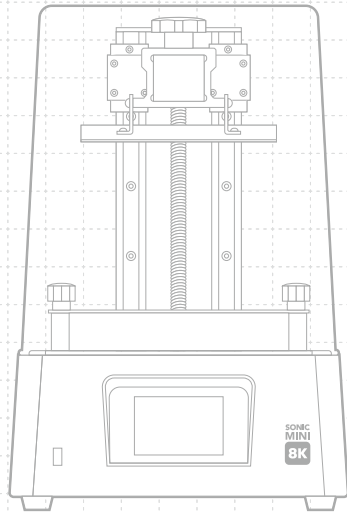


SONIC
MINI
8K



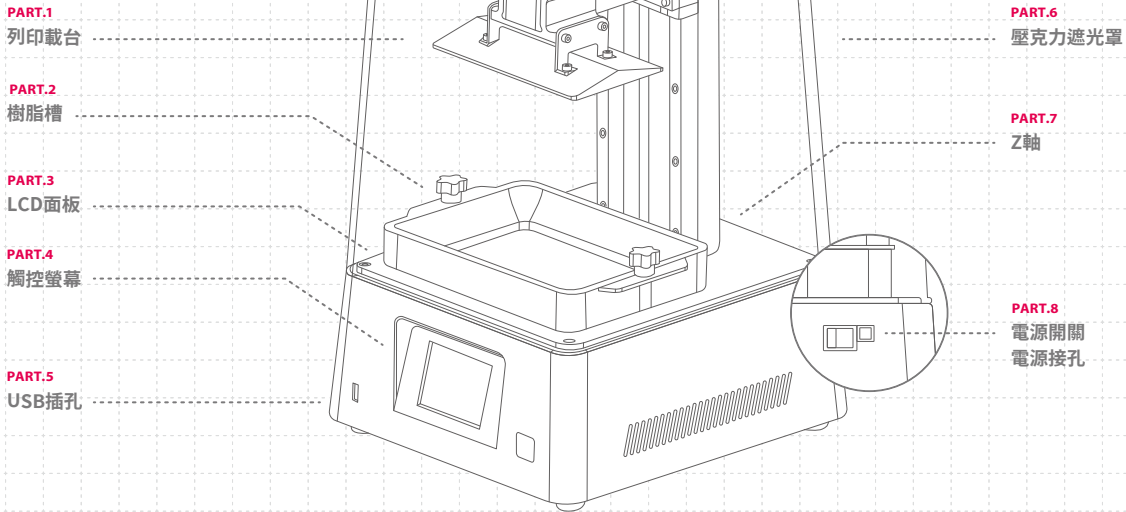
親愛的使用者您好，

非常開心您的加入，為了您良好的使用經驗，請您務必詳閱 Sonic Mini 8K 說明書進行產品測試及列印。



01 產品介紹

機台構造說明



配件盒內容物



客服保固卡



手套



變壓器



塑膠漏斗



軟硬刮刀



六角板手



USB

操作系統

機台系統	Phrozen OS系統
操作介面	3.5吋 IPS觸控面板
切層軟體	CHITUBOX V1.9.0 或以上
檔案傳輸模式	前置USB插孔

技術規格

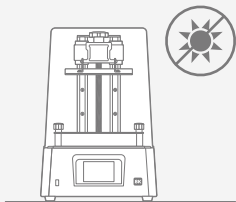
技術規格	LCD光固化
光源設計	Linear Projection LED Module
XY 解析度	0.022 mm
切層厚度	0.01-0.30 mm
最快列印速度	80 mm / 小時
適用電壓	100-240V AC ; 50-60Hz

硬體規格

機台尺寸	長29 x 寬29 x 高42 公分
列印尺寸	長16.5 x 寬7.2 x 高18 公分
機台重量	13 公斤

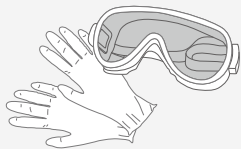
* 以上為實驗測試數據，若有內容更改恕不另行通知。

02 使用前注意事項



列印環境

請將3D列印機置於室內乾燥通風處之水平桌面，並避免陽光直射與高溫曝曬。



保護措施

進行列印時，請佩戴手套、口罩、護目鏡、長袖衣物等個人防護設備。

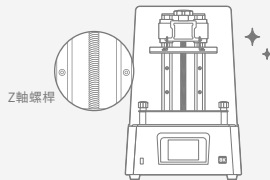
機台保養

Z軸清潔

擦乾Z軸螺桿後，請使用少量一般潤滑油，潤滑Z軸螺桿使其運行更順暢。

機台清潔

可使用消毒酒精與紙巾小心擦拭機台、樹脂槽與列印載台。



03 準備您的3D列印機

初次使用請依下列步驟執行機台Z軸校正與LCD測試，設置您的3D列印機。

LCD 測試

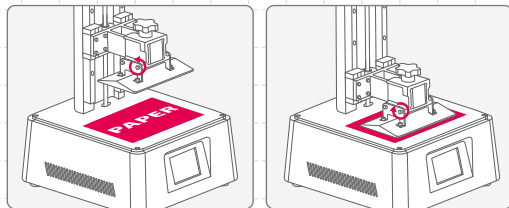
- 1 點選「TOOLS」，然後點選「LCD TEST」。
- 2 確認LCD面板發光區域與觸控面板顯示圖像相同。
- 3 當LCD面板完整顯示圖像時，即完成LCD 測試。



* 實際操作情形請依機台顯示為主。

Z軸校正

- 1 點選「TOOLS」，然後點選「Z CALIB」。
- 2 移除樹脂槽，並放置一張A4紙張在LCD面板上方，並將載台兩側四顆螺絲轉鬆。
- 3 點選「NEXT」，等待載台下降至底部接觸到LCD面板。
- 4 依照對角的順序轉緊4顆螺絲至紙張不移動，點選「DONE」，待載台回到Z軸上方。
- 5 Z軸校正即完成。



04 執行列印測試

執行Z軸校正與LCD測試後，接著可進行列印測試。

準備3D列印檔

- 1 在電腦中，將您的STL檔放入切層軟體CHITUBOX (V1.9.0版本或後續更新版)。
- 2 選擇新增「Sonic Mini 8K」列印機，並依照您使用的樹脂設定列印參數。
- 3 設定完成後，將3D檔案進行切層並放入USB中。
- 4 檔案準備即完成。



切層軟體下載

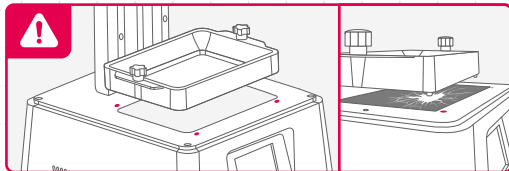


樹脂參數

使用我們推薦的樹脂參數讓列印的表現更加出色。

列印測試

- 1 請將樹脂槽底部的螺絲對準平台凹槽，放置平穩後鎖上兩側螺絲。放置時請特別注意底部螺絲，避免造成LCD面板損毀。
- 2 上下搖晃樹脂1分鐘後倒入樹脂槽，倒入樹脂時請勿超出樹脂槽上的「MAX」標記。
- 3 插入USB，選擇檔案並點選「GO」開始列印。
- 4 列印時請蓋上壓克力遮光罩防止其他光線影響列印。
- 5 列印完成後，請將列印載台斜靠桌面，使用金屬刮刀將列印成品小心取下。



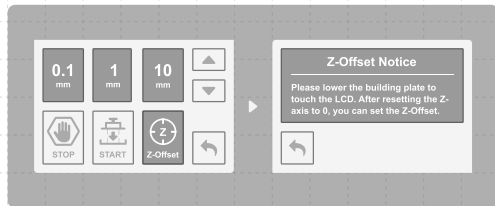
Z-Offset 重設Z軸基準點

Z軸校正結束後，可以使用此功能微調Z軸基準點高度，使列印更順利。通常在進行貼底列印或樹脂流動較緩慢的情況下使用。

依照以下步驟操作觸控螢幕：

TOOLS > MANUAL > START > 0.1mm上升或下降 > Z-Offset > SET

提醒：重啟列印機後會恢復原廠設定的Z軸基準點。



產品保固與售後服務

- Phrozen機台提供1年非人為損壞保固，列印耗材LCD面板與FEP膜除外。
- Sonic Mini 8K的LCD 面板提供3個月非人為損壞保固。
- 若使用上遇到任何問題，請掃描下方QRcode，聯絡Phrozen團隊。



Phrozen
客服團隊

恭喜

恭喜您完成初步操作流程，感謝您的支持並期望您有良好的使用體驗。

歡迎關注Phrozen的社群帳號，並訂閱我們的 Youtube Channel 學習更多關於列印的技巧並分享您的列印經驗。



Facebook



Facebook
台灣站社團



YouTube



Instagram